

**RLS & Associates**



# **COLUMBUS** **TRANSIT STUDY**

PRESENTATION OF ALTERNATIVES  
FOR COMMUNITY INPUT

September 18, 2024

### Study Purpose

Re-examine and optimize public transit in Columbus

#### Service Today

5 Fixed Routes

Complementary Paratransit (Call A Bus)

Funded with FTA, State of Indiana and City Dollars

#### Study Activities

- Public Survey
- Rider Survey
- Interviews with Transit System and Community Agency Leaders
- System Performance Review
- Community Data Analysis



## ColumBUS Transit Study

---

Areas with high population density, low-income residents, and zero-vehicle households are where the routes run today.

Key unserved areas are Taylorsville/Edinburgh and Walesboro

Local population will increase by 9.4% by 2050 - with age 55+ growing by 28%

About 80% of riders agree that buses get them where they need to go; service is reliable; buses are clean and safe

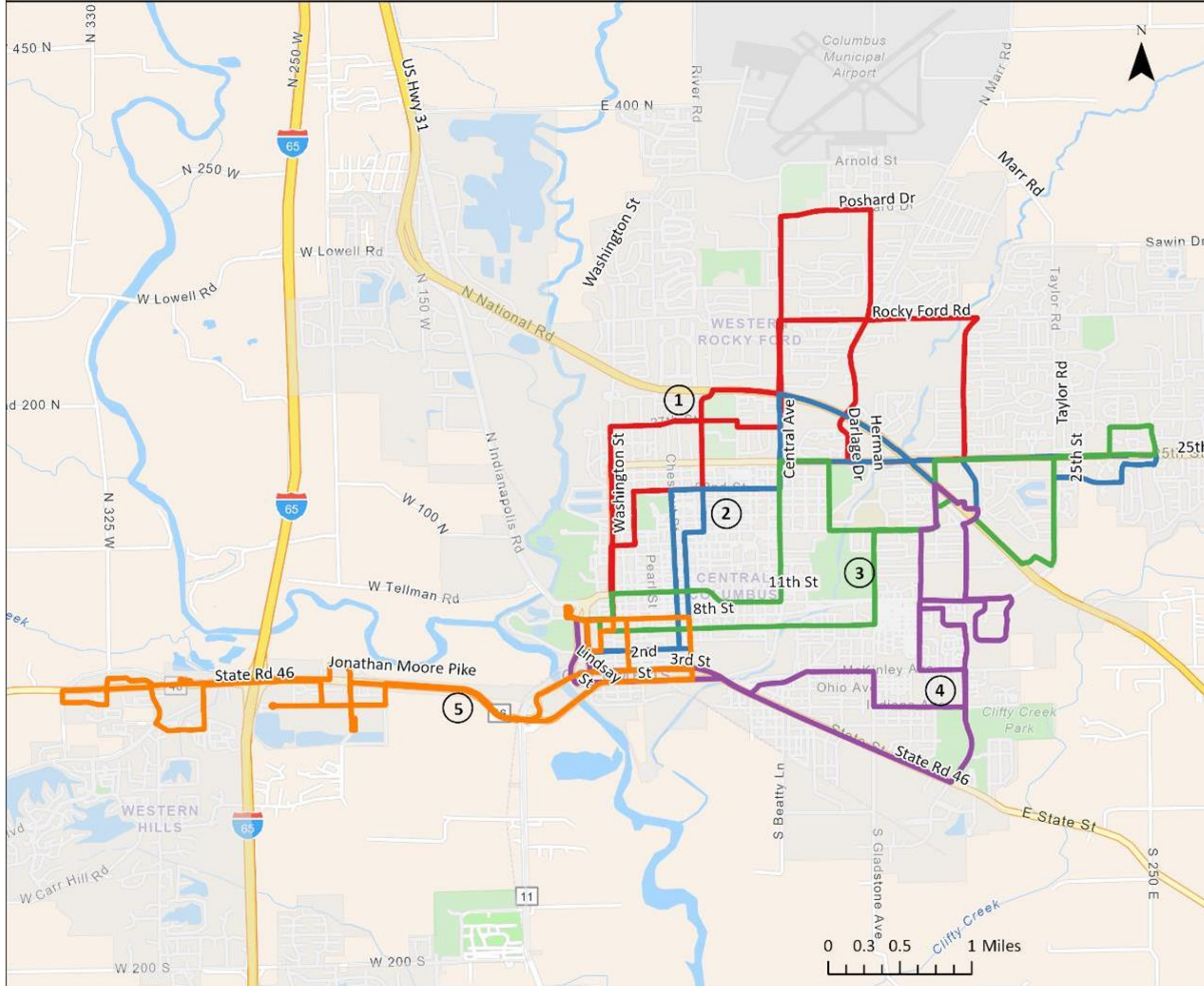
## Key Findings

---

Ridership is strong (over 200,000 rides/year) but some routes duplicate each other and get few riders per hour

More access is needed to healthcare destinations and jobs

# ColumBUS System Map



## Legend

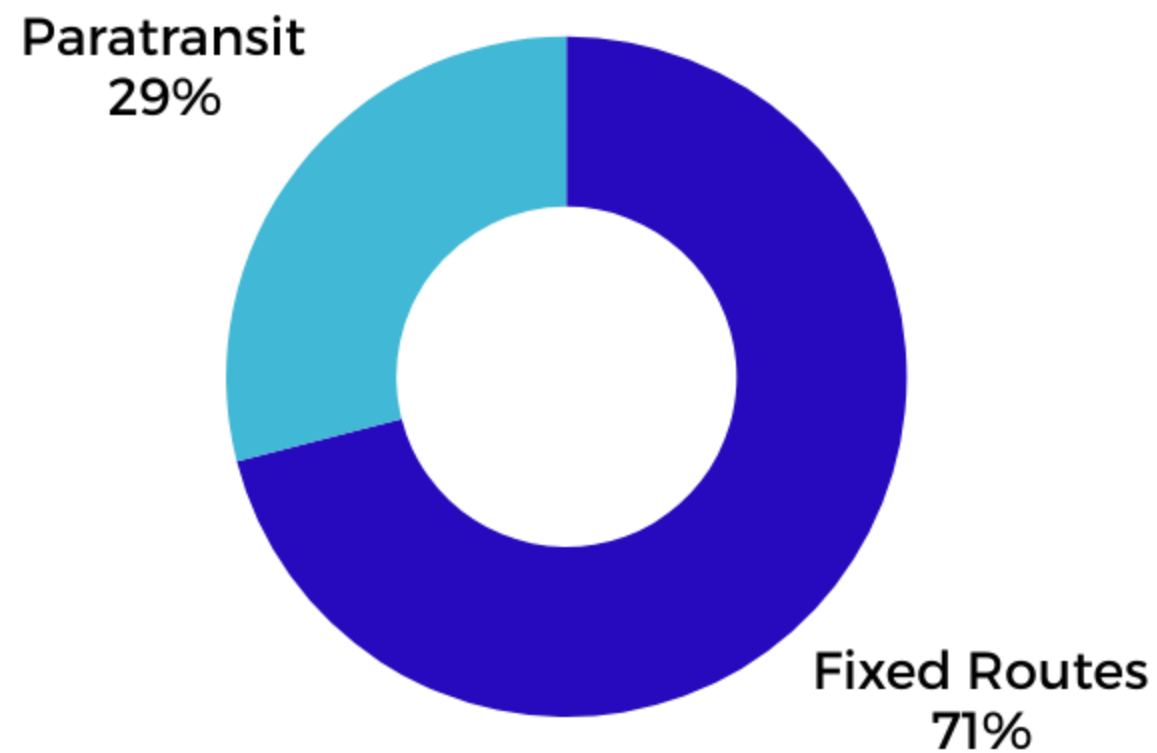
### ColumBUS Routes

-  Route 1
-  Route 2
-  Route 3
-  Route 4
-  Route 5
-  Bartholomew
-  Counties
-  Places



# Service Alternatives

## Service Today

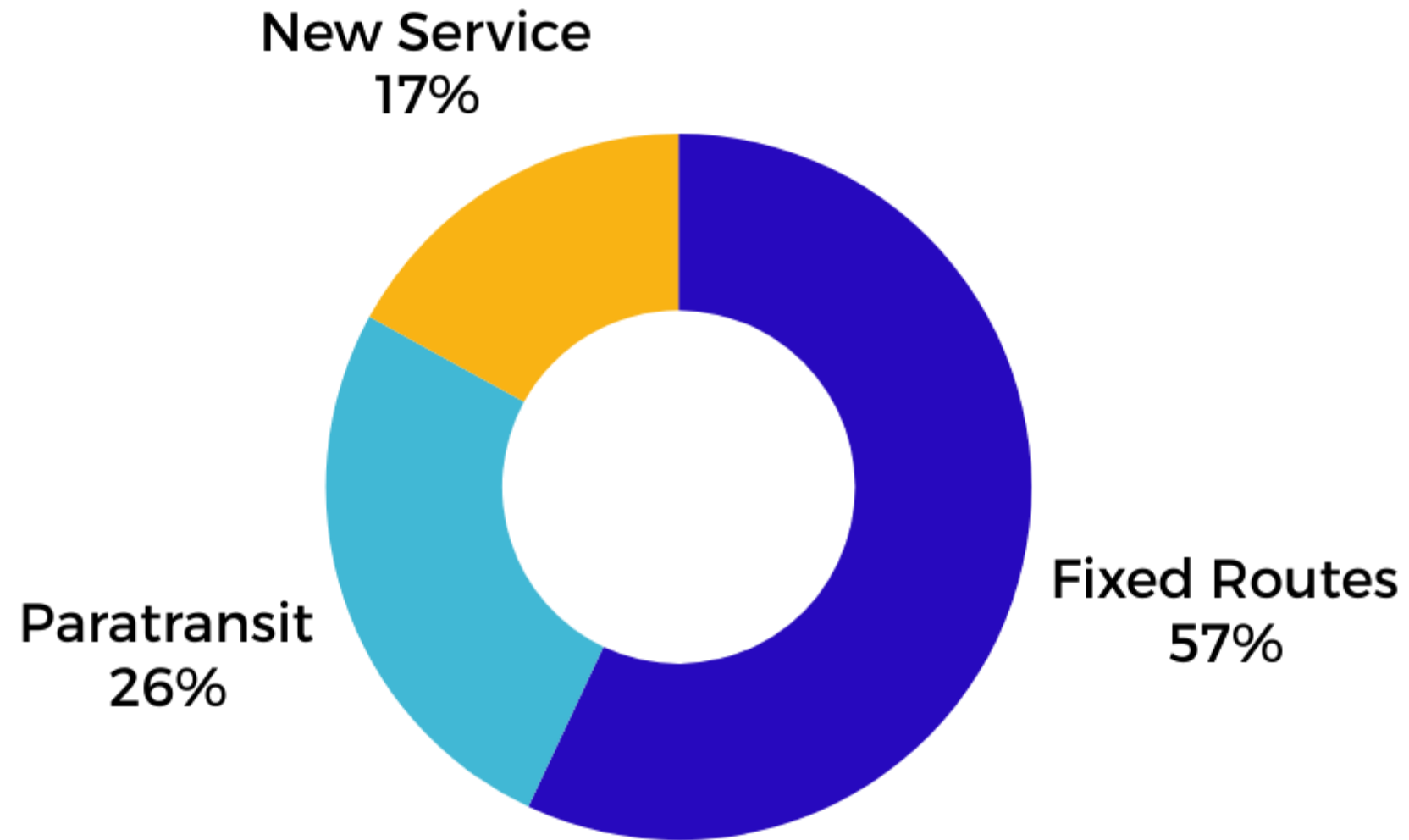


## Alternative 1

- **Four Fixed Routes**
- **Call A Bus Paratransit**
- **New Service to Walesboro and Edinburgh**

## Alternative 2

- **Three Fixed Routes**
- **Call A Bus Paratransit**
- **New Service to Walesboro and Edinburgh**
- **New Curb to Curb Service for General Public**



### Fixed Route Changes

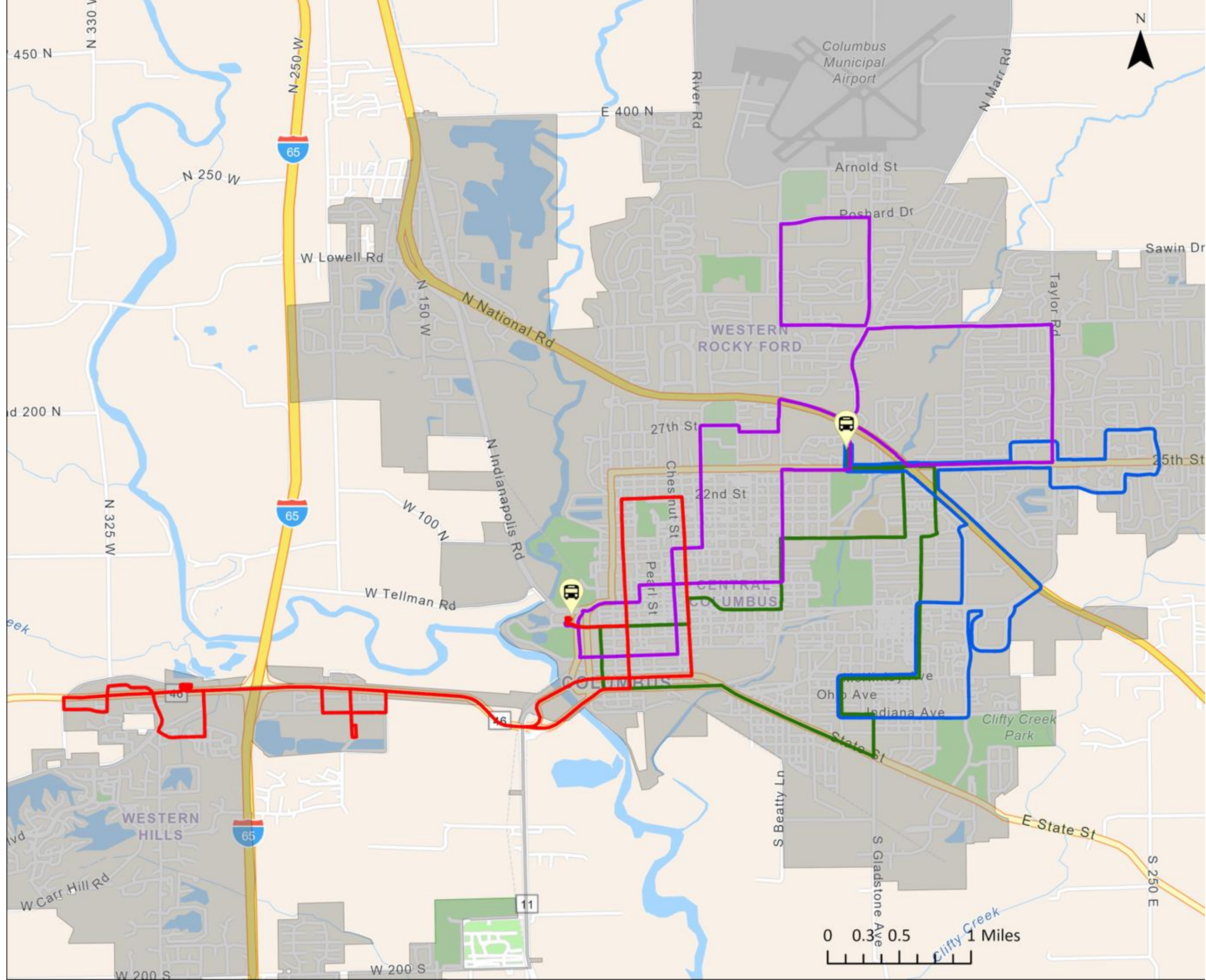
- Consolidate Routes 1-4 into 3 routes connecting at Mill Race Depot and Nexus Park area
- Route 5 downtown routing changes

### Call A Bus Paratransit

- Move to a 30-minute pickup window

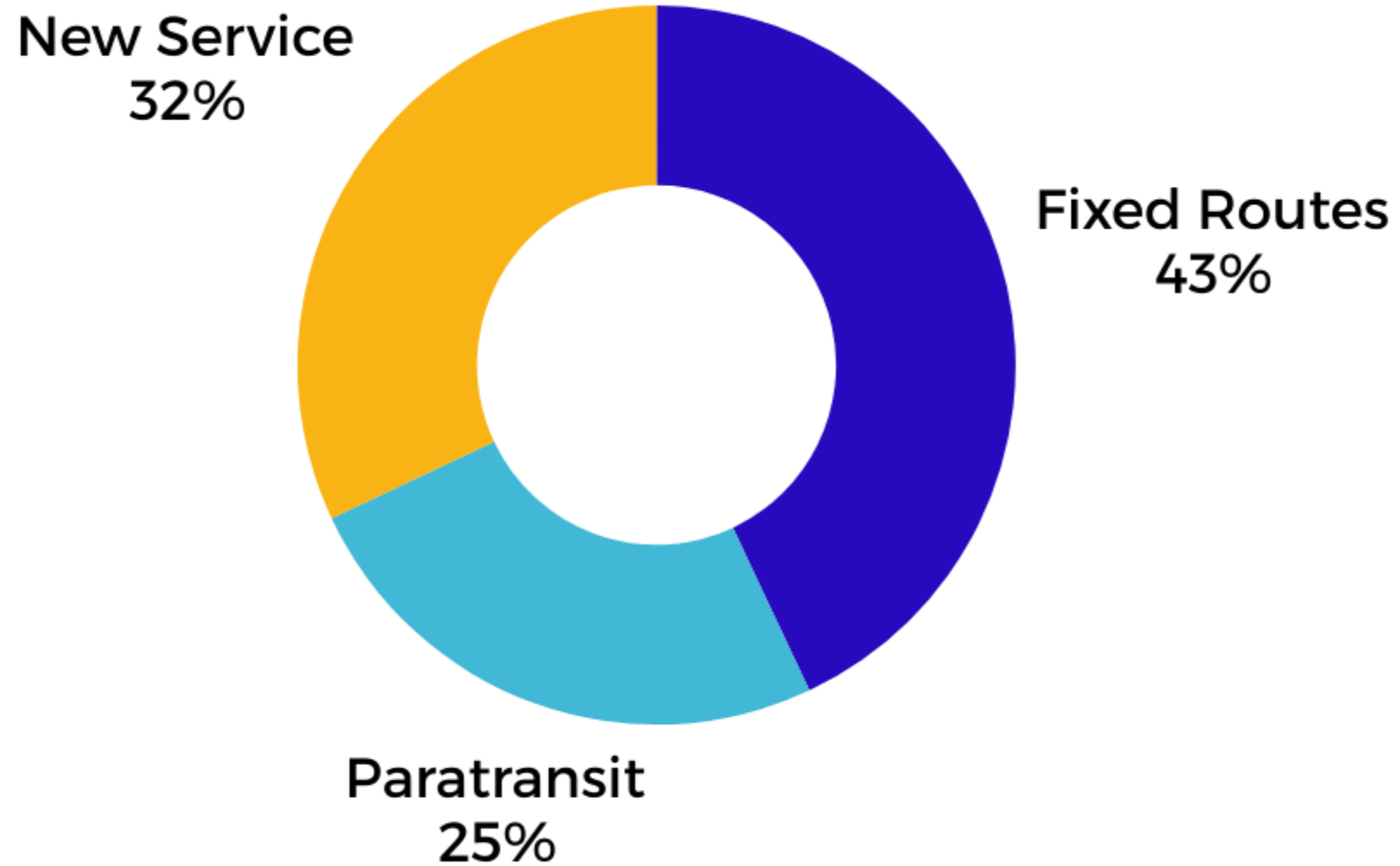
### Call-Ahead Service to Walesboro and Taylorville/Edinburgh

- Provides rides between transfer points (Mill Race Depot & Nexus Park area) and Walesboro employers and Taylorsville/Edinburgh



Example Trip	Current Routes	Alternative 1
<b>Candlelight Village to CRH</b>	Board Rt 1 on Rocky Ford, ride 15 min to Depot; transfer to Rt 3; ride 10 min to CRH	Board Loop 3 (Purple) on Rocky Ford; ride 15 min to NP; transfer to Loop 2 (Green); ride 7 min CRH
<b>The Cole to Nexus Park</b>	Board Rt 4 on 2nd; ride 5 min to Depot; transfer to Rt 2; ride 20 min to 25th (across from NP)	Board Loop 2 (Green) on Jackson; ride 20 min to NP
<b>Williamsburg Way Apartments to Walmart</b>	Walk to 25th; board Rt 2 or 3 on 25th; ride to Target; transfer to Rt 4; ride 55 min to Walmart (includes stop at Depot)	Board Loop 1 (Blue) on Williamsburg Way; ride 30 min to Walmart





**Fixed Route Changes**

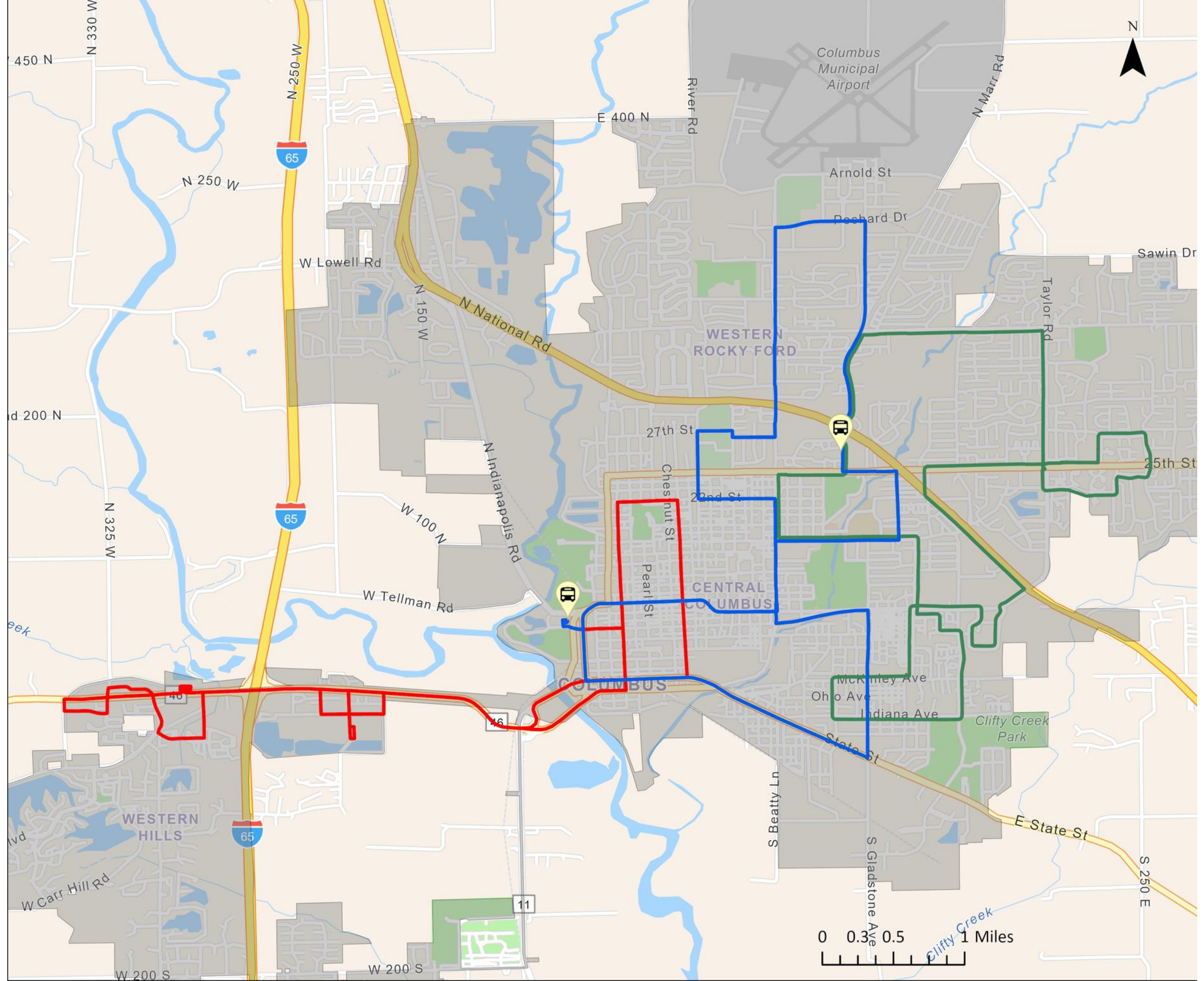
- Consolidate Routes 1-4 into 2 routes connecting at Mill Race Depot and Nexus Park area
- Route 5 downtown routing changes

**Call A Bus Paratransit**

**Call-Ahead Service to Walesboro and Taylorville/Edinburgh**

**General Public Curb to Curb Service**

- Reservation-based rides for the public on weekdays
- Would charge a fare
- Would provide an option for those living too far from fixed routes, or needing access to a location with no bus stop nearby

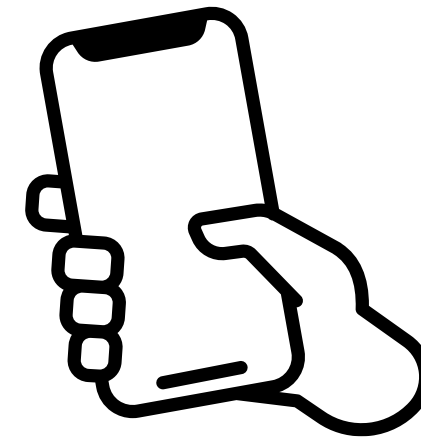


Example Trip	Current Routes	Alternative 2
<p><b>McKinley Apartments to Kroger</b></p>	<p>Ride Route 2 either for 30 min + 0.5-mile walk from Central &amp; 24th; or ride Route 2 for 55 min (both options include stop at Depot)</p>	<ol style="list-style-type: none"> <li>1. Walk 1 block to Route 5 on California, ride to Depot (5 min), transfer to West Loop (Blue), ride to Kroger (10 min)</li> <li>2. Walk 6 blocks to 22nd, ride West Loop (Blue) to Kroger (walk 15 min, ride 5 min)</li> </ol>
<p><b>Doral to Ashford Park Apartments</b></p>	<p>Walk to State St; Ride Route 4 25 min to Target; transfer to Route 2; ride 10-15 min to Ashford Park</p>	<p>Walk to State St; Ride West Loop (Blue) 20-25 min to Ashford Park</p>
<p><b>Centerstone to Fox Pointe Apartments</b></p>	<p>Ride Route 4 15 min to Depot; transfer to Route 3; ride 20 min to Fox Pointe</p>	<p>Ride East Loop (Green) 25 min to Fox Pointe</p>



**Bus Stops**

Move from a flag stop system to a designated bus stop system



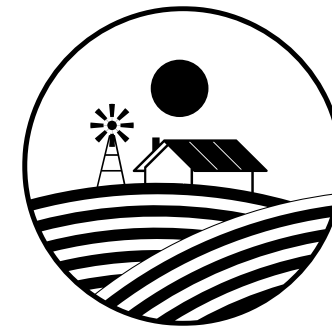
**Public Information**

Enhance public information through improved brochures, website, app and other media



**Technology**

Upgrade paratransit/curb to curb software



**Rural Service**

Collaborate with Bartholomew County to serve rural areas

## **Your Feedback**

What is your opinion on Alternative 1 and Alternative 2? Which one would you choose?

Would you, or someone you know, benefit from the proposed new services?

What avenues for communication should ColumBUS use to inform the community about available services?

Do you foresee any challenges or concerns with either alternative?



**THANK YOU**